



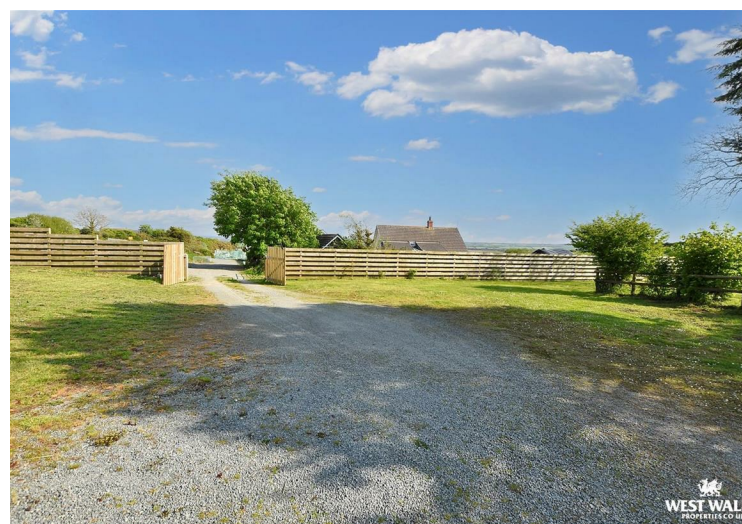
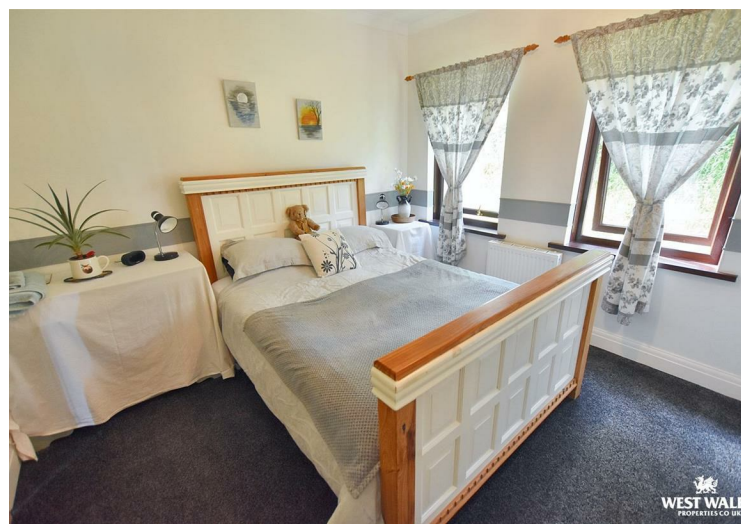
An exciting opportunity to acquire a detached Four bedroom bungalow with a variety of outbuildings, with outline planning permission to be converted into four two bedroom cottages. Set in a prominent position, mid-way between the County Town of Haverfordwest and the popular city of St Davids, along the beautiful Pembrokeshire coastline, this offers great potential for holiday lets or other business opportunities!

The main property offers very well presented accommodation, comprising of an entrance hall, open plan living room and dining room, kitchen/breakfast room, utility room, three double bedrooms and a further study/fourth bedroom. Each bedroom is well equipped with excellent storage in the built in wardrobes, the master boasts a walk in wardrobe and an en-suite bathroom too!

Beautifully maintained gardens surround the property with mature flower/shrub borders, patio areas to the front and a path that leads to an enclosed private patio area and vegetable garden. The property provides ample off road parking, for at least 12 vehicles. There are various workshops and storage areas available in the adjacent outbuilding.

Viewing is essential to appreciate the endless possibilities that the property offers. Planning reference - 17/0139/PA.

The village of Simpson Cross is approximately 4 miles north-west of the county town of Haverfordwest, and within a few minutes drive of the long sandy beach of Newgale, popular with surfers and bathers alike. The beautiful Pembrokeshire coastline, with its rugged cliffs and coves can be enjoyed by walkers on the Coastal Path. The village benefits from a regular bus service between St David's and Haverfordwest, the nearest pubs are at Pelcomb and Roch, and a primary school, and shop/post office in Roch. Haverfordwest provides a wide range of amenities such as main line train station, hospital, library, secondary schools, further education college, leisure centre and swimming pool, cinemas, supermarkets, retail parks etc.



DIRECTIONS

From our Haverfordwest Office take the A487 towards St Davids. Continue along this road for approximately 5 miles, and the property will be found on the left hand side as you enter into Simpsons Cross. What3Words:///brink.slumped.massaging

See our website www.westwalesproperties.co.uk in our TV channel to view our location videos about the area.